



The Shifting Landscape of Substance Abuse Detection



The Rise of Fentanyl and the Importance of Hair Drug Testing.

In a world where substance abuse trends are evolving, this white paper explores the profound impact of two significant developments: the legalization of marijuana and the rise of fentanyl. These changes pose unique challenges to employers striving to maintain safe and compliant workplaces. The paper provides insights and guidance to help organizations adapt and succeed in the dynamic landscape of substance abuse detection.

Drug testing has undergone a significant evolution over the years, shaped by changing societal attitudes, advancements in technology, and the emergence of new substances of abuse.

From the early days of suspicion-based testing to today's comprehensive scientific methods, the landscape of drug testing has transformed in response to the challenges of modern society. In this discussion, we will delve into the history of drug testing, the impact of marijuana legalization, the rise of fentanyl, and the ever-shifting regulatory landscape.

The Evolution of the Drug Testing Process Over Time

A Brief History of Drug Testing

Drug testing, in its rudimentary form, dates back to ancient civilizations. In these early societies, tests were often based on superstitions, like the famous "trial by ordeal." However, it wasn't until the 20th century that drug testing started taking a more scientific and systematic approach. In the mid-20th century, the United States began to utilize drug testing for military personnel and athletes. It wasn't until the late 20th century that workplace drug testing became widespread, largely in response to concerns about substance abuse in the workplace. Urine testing became the standard for many employers, and regulations started to shape the way drug testing was conducted.

Introduction

The Evolution of Drug Testing

- A Brief History of Drug Testing
- Legalization of Marijuana
- The Rise of Fentanyl
- Shifting Regulatory Landscape

Fentanyl: The Emerging Threat

- Understanding Fentanyl
- The Growing Epidemic
- Workplace Implications

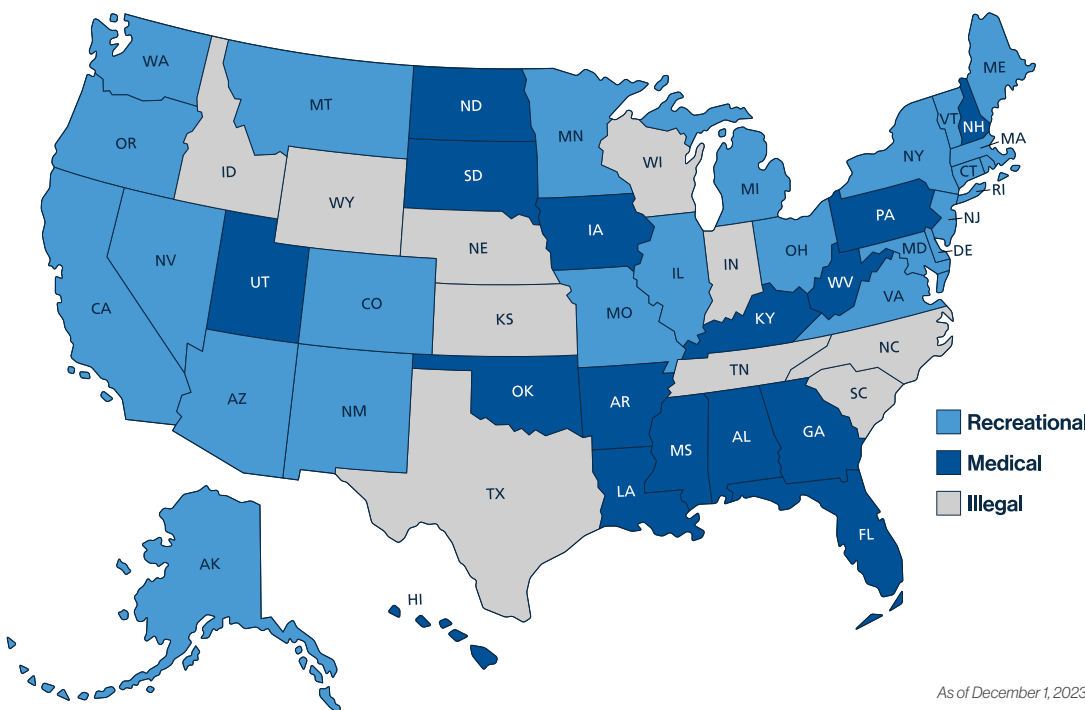
The Advanced 5-Panel Drug Screen

- An Introduction to the Advanced 5-Panel Drug Screen
- The Significance of Hair Testing
- Outperforming Body Fluid Testing

Conclusion

- The Crucial Role of Hair Testing
- Ensuring Workplace Safety in a Changing Landscape

States Where Cannabis is Legal



The Evolution of the Drug Testing Process Over Time Continued

Legalization of Marijuana

One of the most significant changes to the drug testing landscape has been the legalization of marijuana for medical and recreational use in various states and countries. This shift has challenged traditional workplace drug testing policies. While marijuana remains illegal at the federal level in the United States, many states have decriminalized or legalized it in some form, creating a legal conundrum for employers who aim to maintain drug-free workplaces.

Employers have been forced to reconsider their drug testing policies, and many have revised their approaches to marijuana testing. Some have shifted to focus more on impairment testing, while others have maintained a zero-tolerance stance. The evolving legal status of marijuana presents a complex issue that organizations must navigate.

The Rise of Fentanyl

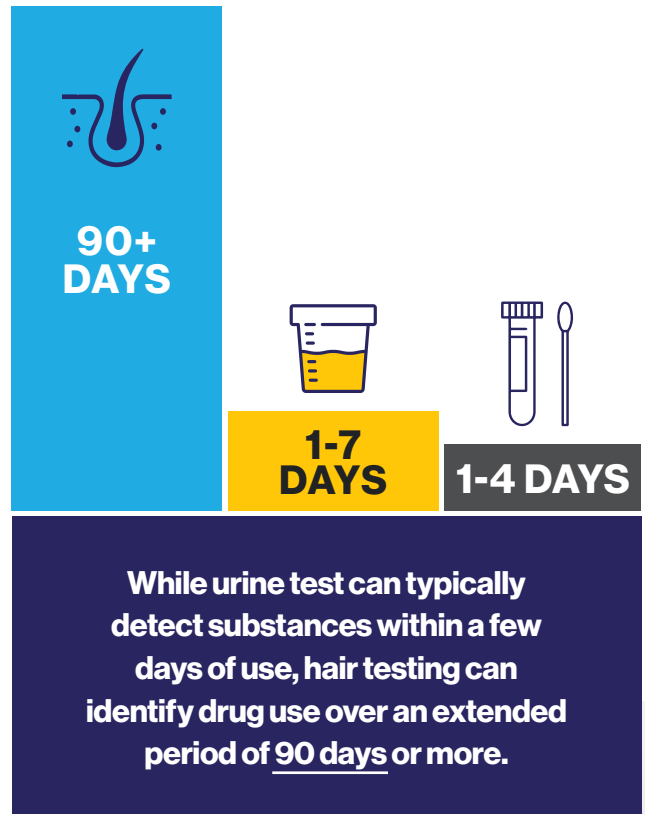
The drug testing landscape has been reshaped by the emergence of fentanyl, a synthetic opioid with a high overdose risk and often used unwittingly, posing unique dangers. Consequently, detecting fentanyl is now a focal point for safety and regulatory compliance in drug testing efforts.

The regulatory framework for drug testing is continually evolving, influenced by changing legality of substances, societal drug perceptions, and technological advances in testing. Employers must proactively update policies to align with these dynamic regulations, which are specific to each jurisdiction. Staying compliant is crucial not only to avoid legal repercussions but also to ensure a safe and efficient work environment.

Shifting Regulatory Landscape

The regulatory landscape surrounding drug testing is in a constant state of flux. It is shaped by factors such as changes in the legal status of substances, societal attitudes towards drug use, and advancements in testing technologies. Employers must remain vigilant and adapt their policies to stay compliant with these ever-changing regulations. Regulations vary by jurisdiction, making it essential for organizations to remain informed about the specific requirements in their area. Ensuring compliance not only safeguards the organization from potential legal challenges but also contributes to maintaining a safe and productive workplace.

How far back can the test detect drugs in the human body?



Fentanyl is the True Emerging Threat in America

Understanding Fentanyl

Fentanyl, a synthetic opioid, has surged onto the scene as a significant and alarming threat in recent years. While it is not a new substance, its widespread misuse and abuse have raised serious concerns across the globe. Fentanyl belongs to a class of synthetic opioids that are far more potent than naturally occurring opioids, such as morphine and heroin. In medical settings, it is used to manage severe pain, particularly after surgery, but in the hands of illicit drug manufacturers and distributors, it has become a dangerous tool for creating potent, often deadly, street drugs.

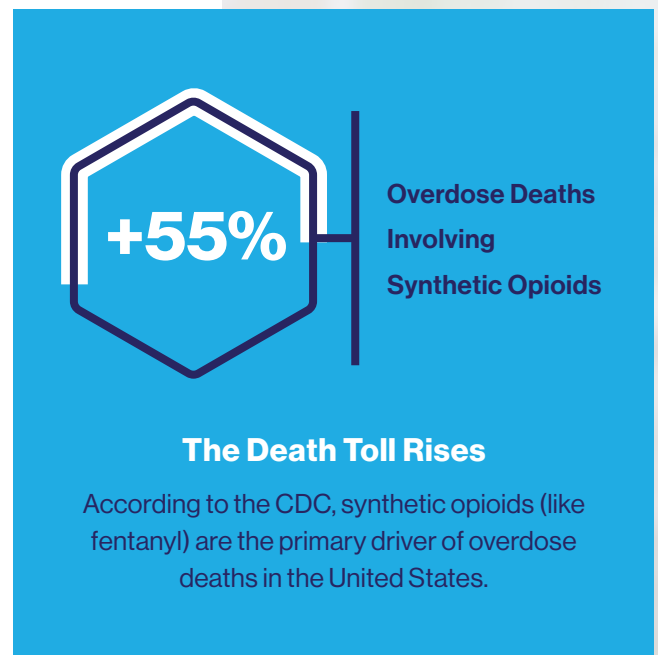
Fentanyl is particularly worrisome due to its potency. Just a small amount, equivalent to a few grains of salt, can have a profound effect on the human body, leading to a rapid onset of intense euphoria. This potency also makes it highly dangerous, as it increases the risk of overdose and death when not administered by a medical professional. Illicitly manufactured fentanyl is often mixed with other drugs like heroin, making it challenging for users to gauge its presence, further exacerbating the risk.

The Growing Epidemic

The use of fentanyl has escalated dramatically in recent years, resulting in a growing public health crisis. What began as a concern in certain regions has now become a global epidemic, affecting communities far and wide. The increasing prevalence of fentanyl in street drugs, particularly opioids like heroin, has led to a spike in opioid-related overdoses and deaths.

This epidemic has devastated individuals, families, and entire communities, straining healthcare systems and law enforcement agencies. The situation is complicated by the illicit production and distribution of fentanyl, which often occurs outside of regulated channels, making it harder to track and control.

The fentanyl epidemic has underscored the need for more comprehensive drug testing solutions, particularly in workplaces, where the safety of employees and the general public is at stake.



Workplace Implications

The emergence of fentanyl as a significant substance of abuse poses unique challenges for workplaces. Unlike traditional drugs, fentanyl is not always consumed intentionally. Users may unknowingly come into contact with fentanyl, either through exposure in the environment or as a contaminant in other substances. The unpredictable nature of fentanyl use makes it essential for employers to take proactive measures to ensure the safety and well-being of their workforce.

Workplace drug testing programs must evolve to address the threat of fentanyl. This includes not only detecting fentanyl in employee samples but also creating awareness and education programs to help employees recognize the signs of fentanyl exposure and respond appropriately.

Moreover, fentanyl's presence in the workplace can have a severe impact on employee health and productivity. Accidental exposure can lead to impairment, posing safety risks for both employees and the public. Employers must take measures to minimize the risk of fentanyl exposure and address potential cases promptly.

The Advanced 5-Panel Drug Screen

An Introduction to the Advanced 5-Panel Drug Screen

The Advanced 5-Panel Drug Screen represents a pioneering and comprehensive approach to substance abuse detection. In an era where evolving drug trends and shifting regulatory landscapes create new challenges for employers, this innovative solution is designed to meet the demands of the modern workplace.

The term “5-panel” indicates that this test screens for five distinct categories of substances, which currently include cocaine, opioids, PCP (Phencyclidine), amphetamines, and fentanyl. While traditional drug tests typically focus on urine samples, the Advanced 5-Panel Drug Screen introduces a revolutionary shift towards hair testing, offering a more accurate, extended, and reliable means of substance detection.

The Significance of Hair Testing

The significance of hair testing cannot be understated in the realm of drug screening. Unlike traditional urine or saliva tests, hair testing offers several compelling advantages. One of the most notable benefits is its extended detection window. While urine tests can typically detect substances within a few days of use, hair testing can identify drug use over an extended period – often up to 90 days or more. This provides employers with a much broader view of an individual’s substance use history.

Hair testing is also inherently less invasive and more discreet, making it a preferred option for both employers and employees. It requires only a small sample of hair, typically from the scalp, and is performed with minimal discomfort. Furthermore, the collection process is straightforward and eliminates the potential for sample adulteration.

Another critical aspect of hair testing is its ability to differentiate

between occasional and chronic drug use. This is particularly valuable in the workplace, where employers must distinguish between occasional use that may not pose a significant risk and habitual use that could jeopardize workplace safety.

Outperforming Body Fluid Testing

In recent years, the Advanced 5-Panel Drug Screen has demonstrated its superiority over traditional body fluid testing, such as urine or saliva tests. The limitations of body fluid tests, including their shorter detection windows and potential for false-negative results, have made them less reliable in identifying chronic or historical substance use.

Hair testing, on the other hand, offers a more comprehensive and accurate assessment. It is well-suited for identifying substances like fentanyl, which may be used sporadically, or for detecting long-term drug use patterns, such as opioid dependence. As a result, the Advanced 5-Panel Drug Screen provides employers with a more comprehensive understanding of their employees’ substance use, ultimately enhancing workplace safety and compliance.

In a rapidly changing landscape of substance abuse and evolving legal regulations, the Advanced 5-Panel Drug Screen represents a progressive solution for employers looking to adapt and ensure the safety and well-being of their workforce. By embracing the advantages of hair testing, organizations can stay ahead in the evolving field of drug testing, maintain compliant workplaces, and contribute to a safer and more productive working environment.



Conclusion

The Crucial Role of Hair Testing

As we conclude our exploration of the evolving landscape of substance abuse detection and the critical developments in the field of drug testing, one resounding theme emerges—the crucial role of hair testing. In an era where the dynamics of substance use are rapidly changing, and the legal environment surrounding it is shifting, hair testing has proven to be an invaluable tool for employers.

The Advanced 5-Panel Drug Screen, with its pioneering approach to comprehensive substance detection, exemplifies the effectiveness and relevance of hair testing. Its extended detection window, less invasive collection method, and ability to differentiate between occasional and chronic drug use make it an indispensable asset for maintaining workplace safety and compliance.

This evolution in drug testing methodologies represents a proactive step towards adapting to the new realities of substance abuse, particularly in light of the legalization of marijuana and the alarming rise of fentanyl. It underscores the importance of staying ahead of the curve and embracing innovative solutions that provide employers with a more comprehensive understanding of their workforce's substance use history.

Ensuring Workplace Safety in a Changing Landscape

In the face of a rapidly changing substance abuse landscape and the ever-shifting regulatory environment, employers must be vigilant in their pursuit of ensuring workplace safety. The importance of this endeavor cannot be overstated, as the well-being of employees and the integrity of the organization are at stake.

The rise of fentanyl has presented an acute challenge to employers, as it introduces a new dimension of risk and unpredictability. Fentanyl's potency and potential for accidental exposure make it a significant workplace concern, demanding proactive measures for detection and prevention.

The legalization of marijuana further complicates the substance abuse landscape, challenging employers to adapt their drug testing policies to maintain safety while respecting the changing legal status of this substance.

As we move forward, it is evident that the role of hair testing and innovative solutions like the Advanced 5-Panel Drug Screen is instrumental in navigating these complexities. By embracing these advancements, employers can uphold their commitment to workplace safety and compliance, create awareness, and educate their workforce, and ultimately contribute to a safe and productive working environment.